



Products and Services

- Mouse Monoclonal Antibody
- Rat Monoclonal Antibody
- Human Antibody
- Hybridoma Sequencing
- Polyclonal Antibody

ALL

PBMC (peripheral blood mononuclear cells) from ALL (acute lymphoblastic leukemia) patient are isolated from blood samples using standard Ficoll-Paque and density gradient centrifugation. The PMBC cells can be used for isolation of T cells and other cell types. T cells can be used for generating CAR-T cells, for selection different subtypes of cells CD4⁺, CD8⁺ or others and used for different immunological experiments.

T cells can be isolated from PBMC cells. T cells can be activated with CD28/CD3 beads (Figure 1) and expanded >100 fold or used for flow cytometry or cytotoxicity assays (Figures 2, 3)

DATA

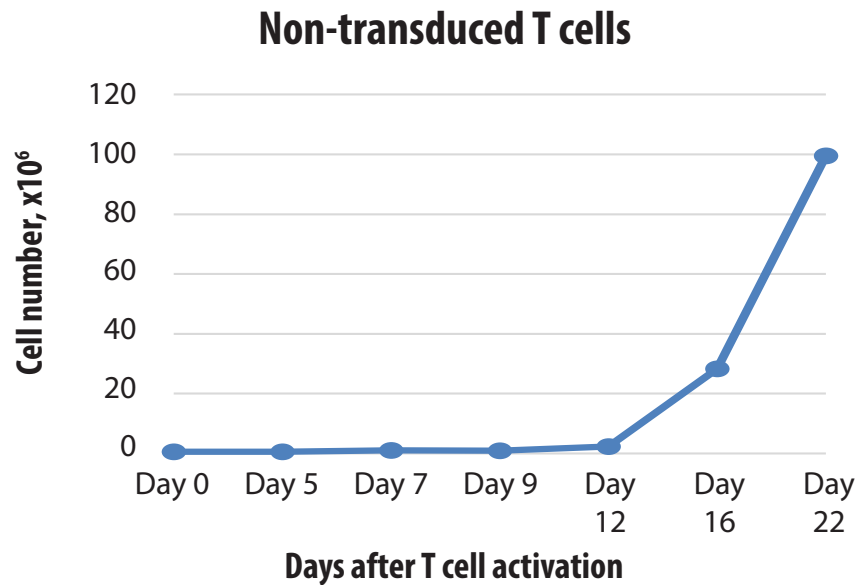


Figure 1. The growth curve of non-transduced T cells. Non-transduced T cells are activated and expanded more than 100-fold with CD28/CD3 beads and IL-2.

* Note: Healthy donor T cells were used.



Products and Services

- Mouse Monoclonal Antibody
- Rat Monoclonal Antibody
- Human Antibody
- Hybridoma Sequencing
- Polyclonal Antibody

Non-transduced T cells

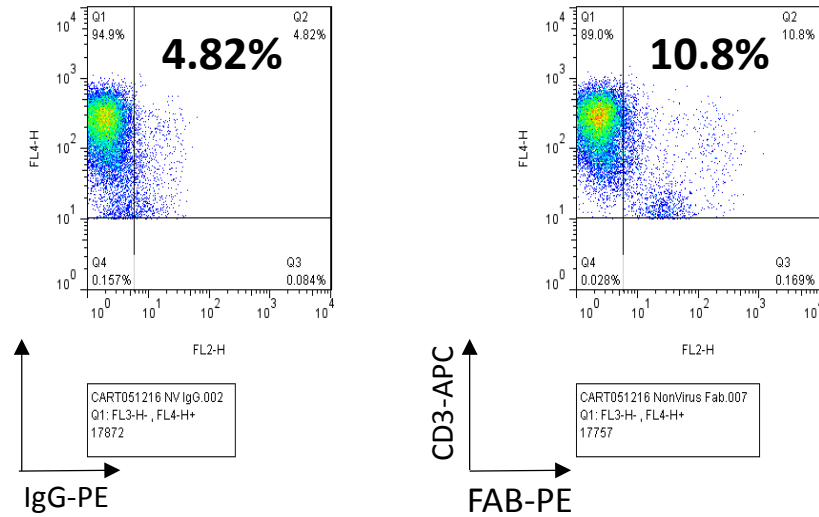


Figure 2. Non-transduced cells have background FAB staining versus >60% CAR-T cells (Not shown).
 * Note: Healthy donor T cells were used.

Non-transduced T cells

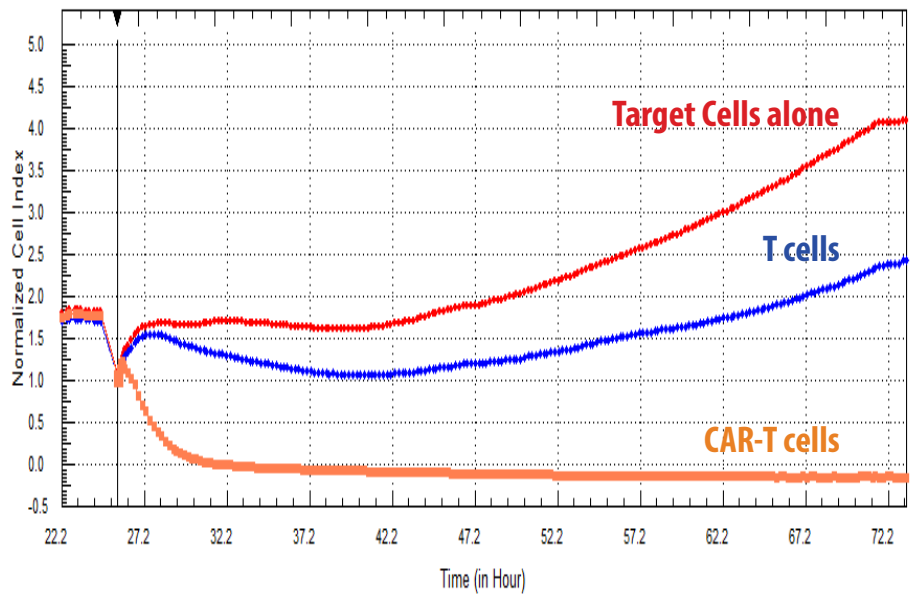


Figure 3. RTCA. Non-transduced T cells have minimal effect on target pancreatic cancer cell cytotoxicity compared with tumor antigen-specific CAR-T cells.
 * Note: Healthy donor T cells were used.