



Products and Services

- Mouse Monoclonal Antibody
- Rat Monoclonal Antibody
- Human Antibody
- Hybridoma Sequencing
- Polyclonal Antibody

The CHO (Chinese hamster ovary) cell line is an epithelial cell line derived from the ovary of the Chinese hamster. This CHO cell line stably overexpresses CD37 antigen. This cell line is convenient for assays with CAR-T cells to measure specific cytotoxicity targeting CD37 antigen, which is overexpressed in many hematological cancers (leukemia, lymphoma and others).

The cells are positive for CD37 by FACS (Figure 1). The CHO-CD37 cells are available for functional assays with CD37-CAR-T cells, CD37-bi-specific antibodies, can be used for in vivo xenograft studies, and more.

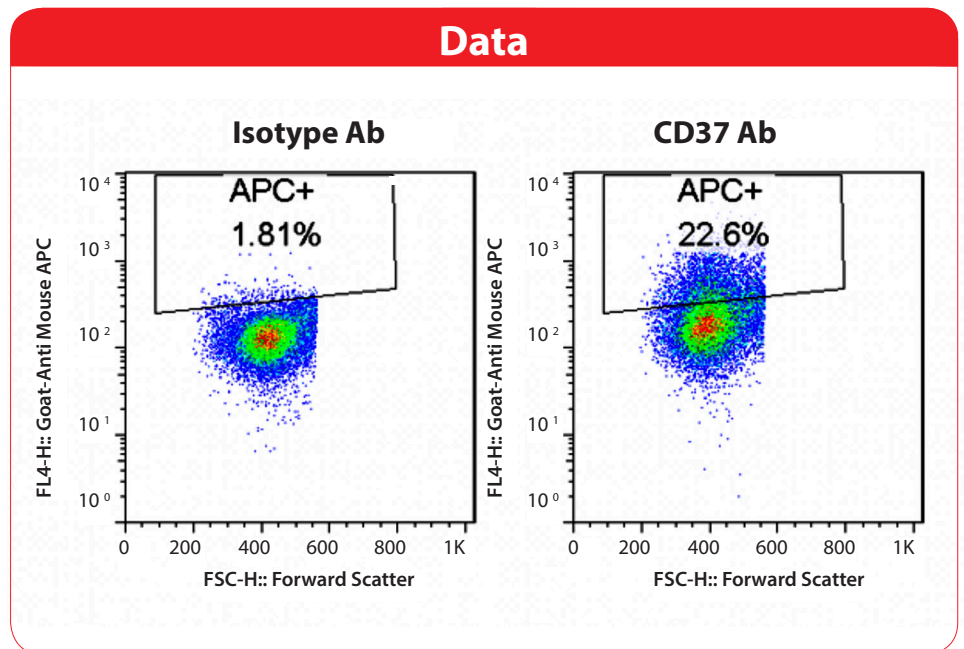


Figure 1. CD37 detection by FACS in CD37-lentivirus-transduced CHO cells.