



PM-AB002 BEAM2 ANTIBODY

We have **Beam 2 antibody** that detects Beam2 site in our CAR-Beam-2 T cells. This antibody can be used for FACS analysis to detect CAR+ cells. This is mouse monoclonal antibody and can be used for FACS using standard protocol.

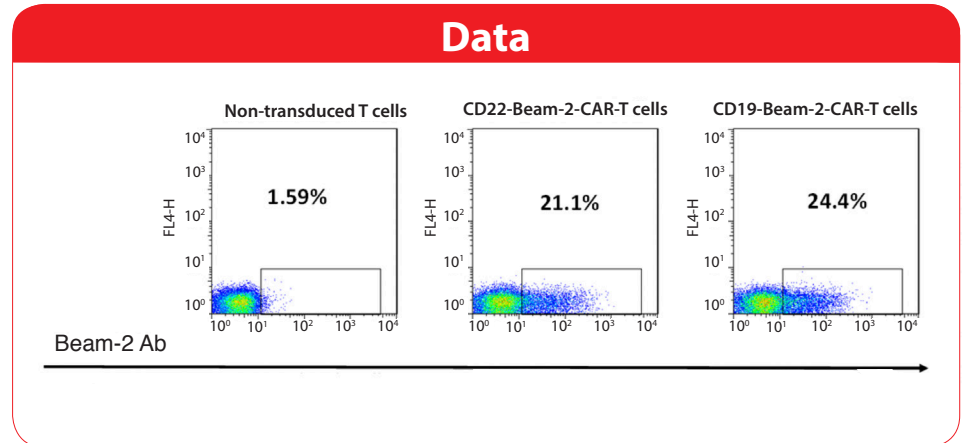


Figure 1. Beam 2 antibody effectively detects CD19 and CD22-Beam-2-CAR-T cells