

PM-AB001 BEAM1 ANTIBODY

We have **Beam 1 antibody** that detects Beam1 site in our CAR-Beam-1 T cells. This antibody can be used for FACS analysis to detect CAR+ cells. This is mouse monoclonal antibody and can be used for FACS or Western blotting using standard protocol.

Data

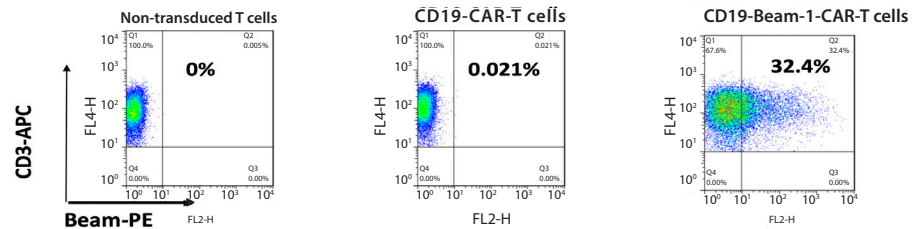


Figure 1. Beam 1 antibody effectively detects CD19-ScFv-Beam1-CAR-T cells

Products and Services

- Mouse Monoclonal Antibody
- Rat Monoclonal Antibody
- Human Antibody
- Hybridoma Sequencing
- Polyclonal Antibody