



Products and Services

- Mouse Monoclonal Antibody
- Rat Monoclonal Antibody
- Human Antibody
- Hybridoma Sequencing
- Polyclonal Antibody

The HeLa cervical cancer cell line is transduced with CS1⁺-GFP⁺ lentivirus and stably overexpress CS1 and GFP proteins. CS1 is often overexpressed in hematological cancers, such as multiple myeloma.

The cells are positive for CS1 and GFP proteins by FACS (Figure 1). HeLa cells have >90% GFP and 90% CS1 positive cells. The HeLa-CS1 cells are available for functional assays with CS1-CAR-T cells, CS1-bi-specific antibodies, can be used for in vivo xenograft studies and imaging, and more.

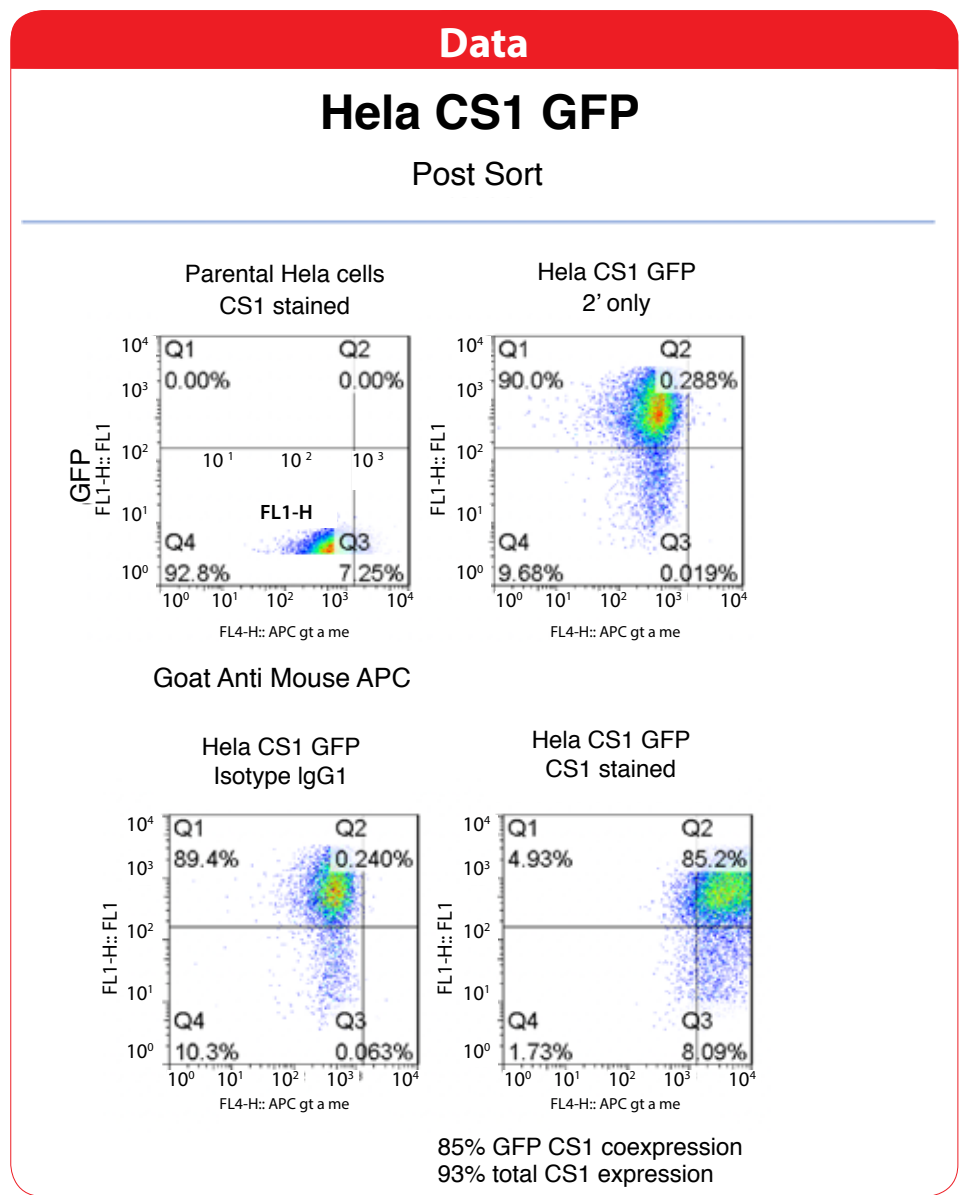
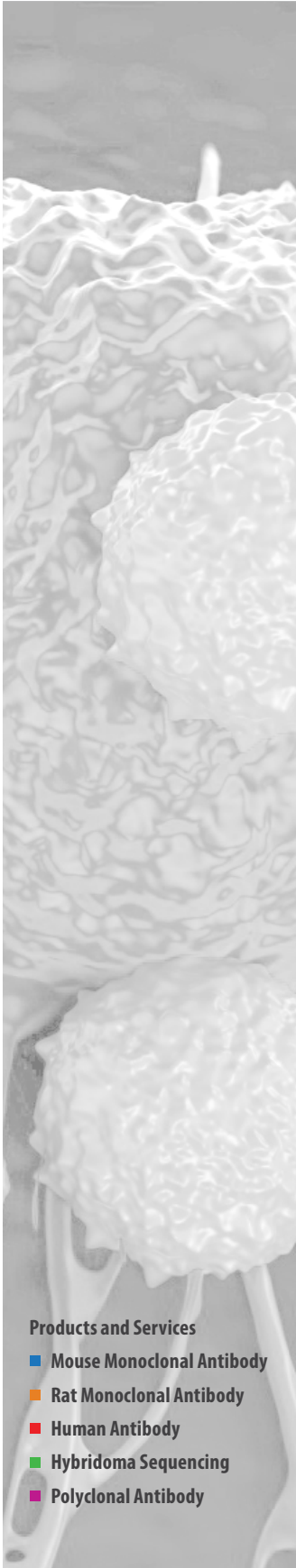


Figure 1. CS1 and GFP detection by FACS in CS1⁺-GFP⁺ lentivirus-transduced HeLa cells. HeLa cells have >90% GFP and 90% CS1 positive cells.



Products and Services

- Mouse Monoclonal Antibody
- Rat Monoclonal Antibody
- Human Antibody
- Hybridoma Sequencing
- Polyclonal Antibody

Data

Hela-CS1 cells

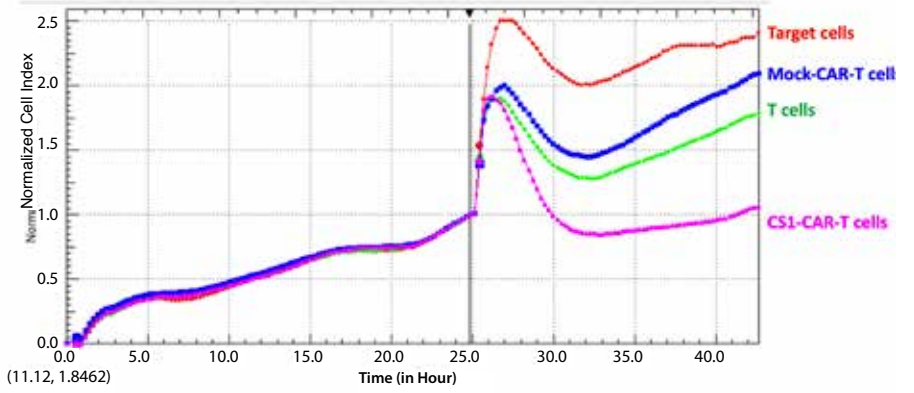


Figure 2. CS1-CAR-T cells kill HeLa-CS1 stable cell line.