

The BxPC-3 pancreatic cancer cell line positive for GFP⁺ and Luc⁺ is available from ProMab. The cell line was transduced with GFP-luciferase lentivirus. The cells were checked for expression of GFP by FACS (Figure 1) and sorted for stable expression. The cell line can be used for imaging in mice or other experiments.

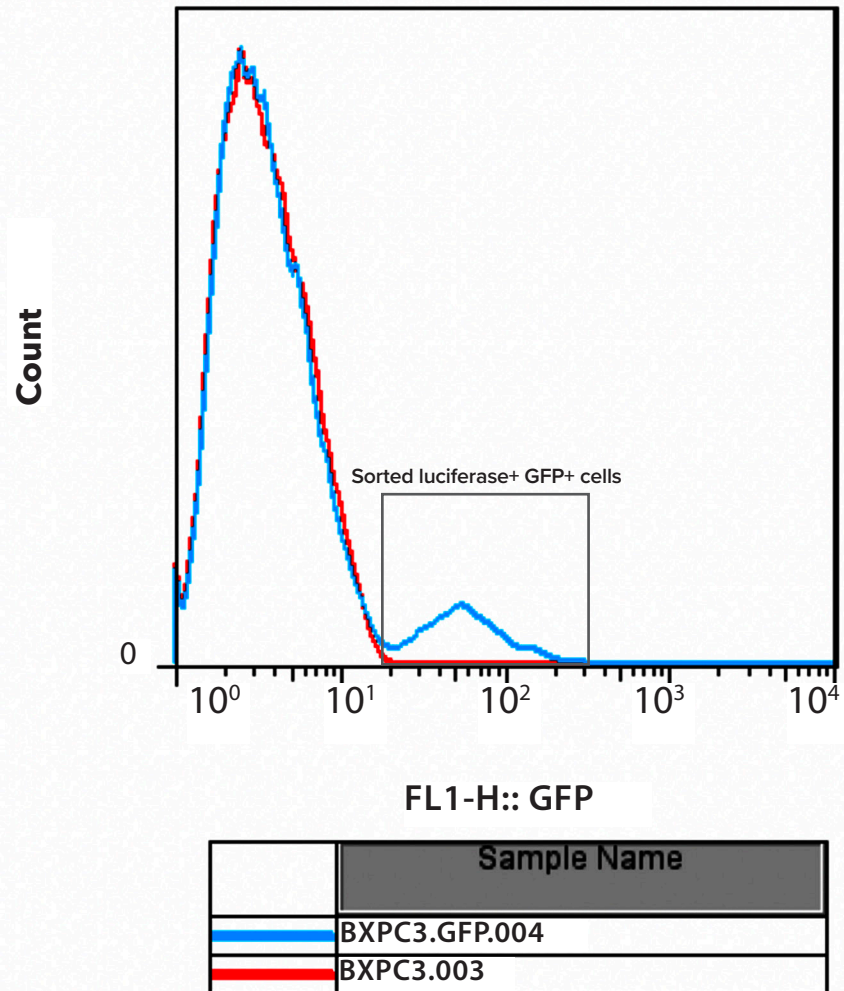




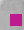


Figure 1. Expression of GFP in BxPC3-GFP⁺-luciferase⁺ cell line.

Products and Services

-  Mouse Monoclonal Antibody
-  Rat Monoclonal Antibody
-  Human Antibody
-  Hybridoma Sequencing
-  Polyclonal Antibody