



**Products and Services**

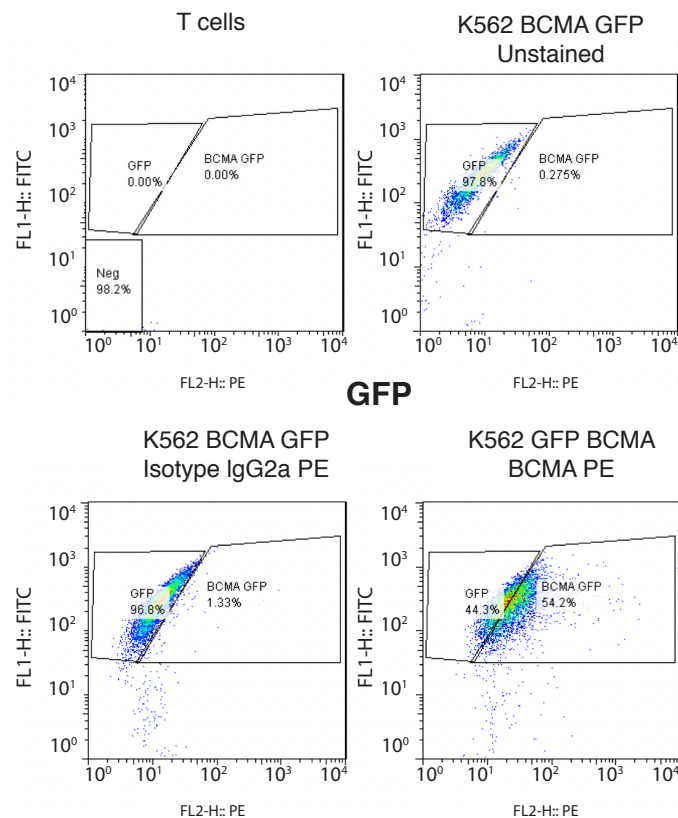
- Mouse Monoclonal Antibody
- Rat Monoclonal Antibody
- Human Antibody
- Hybridoma Sequencing
- Polyclonal Antibody

The **K562 cell line** is a cell line from the pleural effusion of a 53-year-old female with chronic myelogenous leukemia in terminal blast crises. This K562 cell line is transduced with a BCMA<sup>+</sup>-GFP<sup>+</sup>-lentivirus and stably overexpresses BCMA and GFP. BCMA is B-cell maturation antigen which is often overexpressed in multiple myeloma.

The cells that express BCMA-GFP<sup>+</sup> are positive for BCMA and GFP by FACS (Figure 1), and can be sorted by FACS. The K562-BCMA cells are available for functional assays with BCMA-CAR-T cells, BCMA-bi-specific antibodies, can be used for in vivo xenograft studies and imaging, and more.

**Data**

**K562 BCMA GFP**  
Post Sort



**Cells have 97-98% GFP Expression**  
**BCMA Expression at Least 50%**  
**May require sorting with gates set on bi-exponential plot (not serial histogram gating)**

Figure 1. BCMA and GFP detection by FACS in BCMA<sup>+</sup>-GFP<sup>+</sup> lentivirus-transduced K562 cells.