

RPMI8226 multiple myeloma cell line positive for GFP⁺-Luc⁺ is available from ProMab. This cell line was transduced with GFP-Luciferase lentivirus and cells were checked for expression of GFP (Figure 1) and sorted for stable expression. The cell line can be used for imaging in mice.

Data

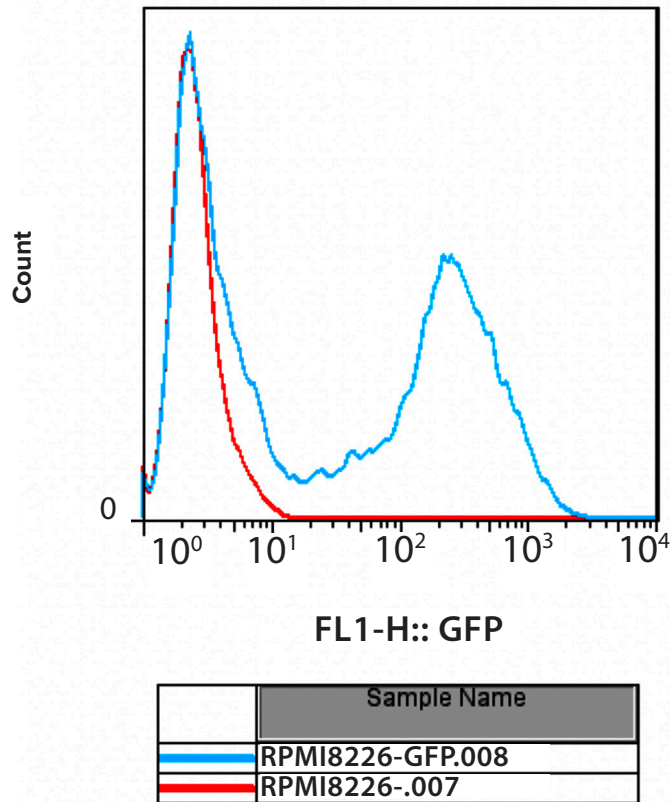







Figure 1. Expression of GFP in RPMI8226-GFP⁺-Luciferase⁺ cell line.

Products and Services

-  Mouse Monoclonal Antibody
-  Rat Monoclonal Antibody
-  Human Antibody
-  Hybridoma Sequencing
-  Polyclonal Antibody