



The CHO (Chinese hamster ovary) cell line is an epithelial cell line derived from the ovary of the Chinese hamster. CHO cell line stably overexpresses CS-1 antigen. This cell line is convenient for assays with CAR-T cells to measure specific cytotoxicity targeting CS-1 antigen which is overexpressed in multiple myeloma cells. The cells stably express CS-1 antigen (Figure 1). The cells can be used for different assays such as cytotoxicity with CAR-T cells (Figure 2).

### Data

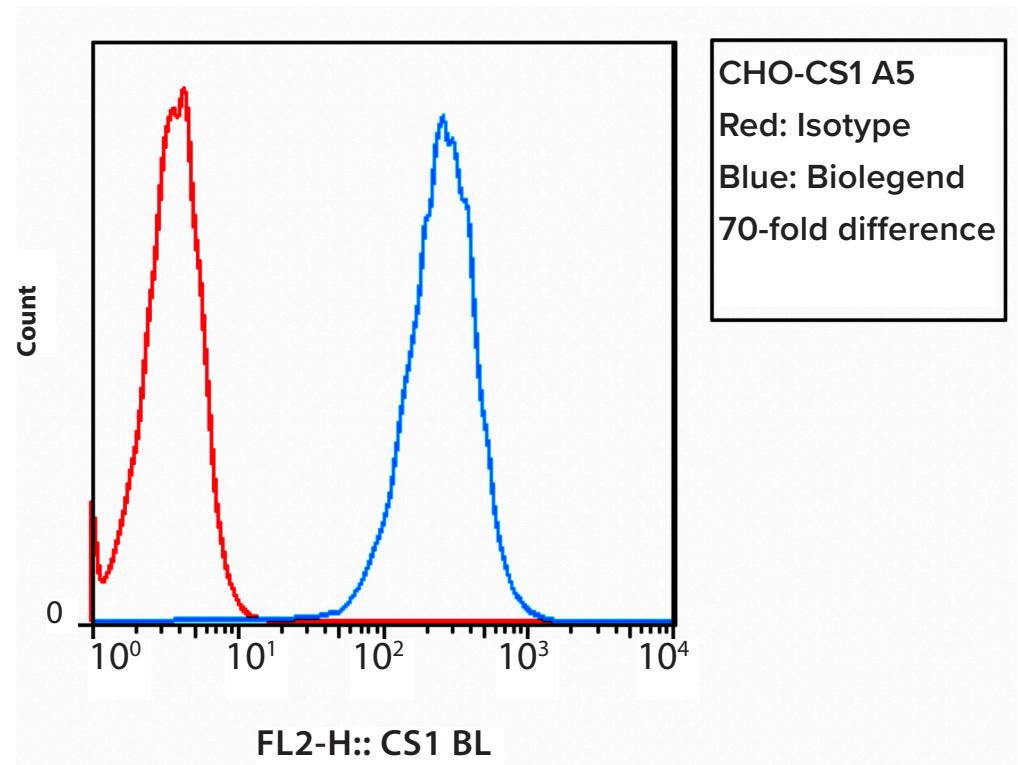


Figure 1. Expression of CS-1 in CHO-CS-1 cells. Red color: isotype, blue color: CS-1 antibody (Biolegend).