



Products and Services

- Mouse Monoclonal Antibody
- Rat Monoclonal Antibody
- Human Antibody
- Hybridoma Sequencing
- Polyclonal Antibody

The CHO (Chinese hamster ovary) cell line is an epithelial cell line derived from the ovary of the Chinese hamster. This CHO cell line stably overexpresses CD22 antigen. This cell line is convenient for assays with CAR-T cells to measure specific cytotoxicity targeting CD22 antigen, which is overexpressed in many hematological cancers (leukemia, lymphoma and others). The cells stably express CD22 and are positive for CD22 by FACS (Figure 1A). ProMab offers CHO-CD22 cell lines available with medium and high expression of CD22 (Figure 1B).

ProMab's engineered target cell lines can be used for different assays with CAR-T effector cells, such as cytotoxicity (Figure 2).

Data

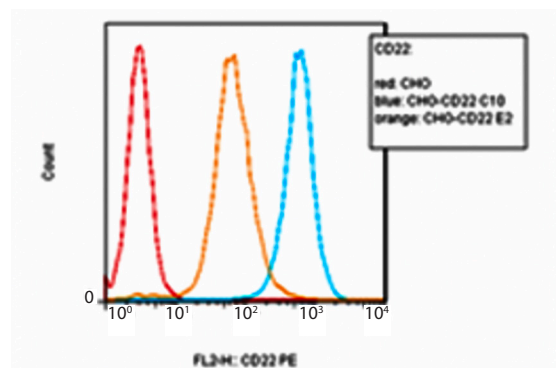
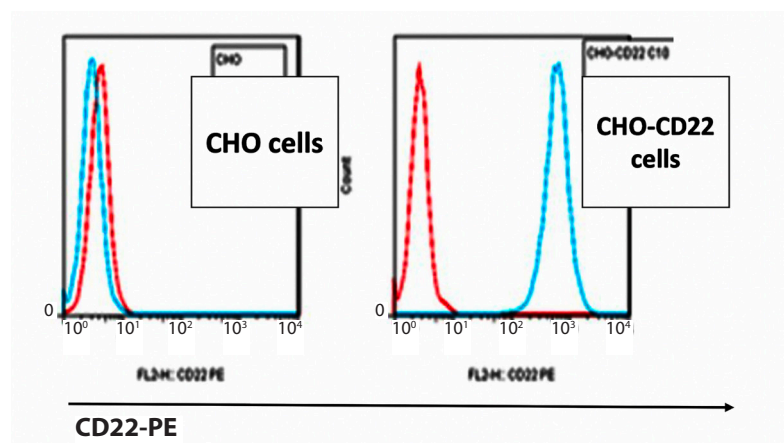


Figure 1. (A) CHO-CD22 cells stably expressing CD22 antigen. Red color: isotype; blue color: CD22. Different level of CD22 expression in CHO-CD22 cells. (B) Red color: isotype; orange color: medium expression of CD22; blue color: high expression of CD22.



Products and Services

- Mouse Monoclonal Antibody
- Rat Monoclonal Antibody
- Human Antibody
- Hybridoma Sequencing
- Polyclonal Antibody

Data

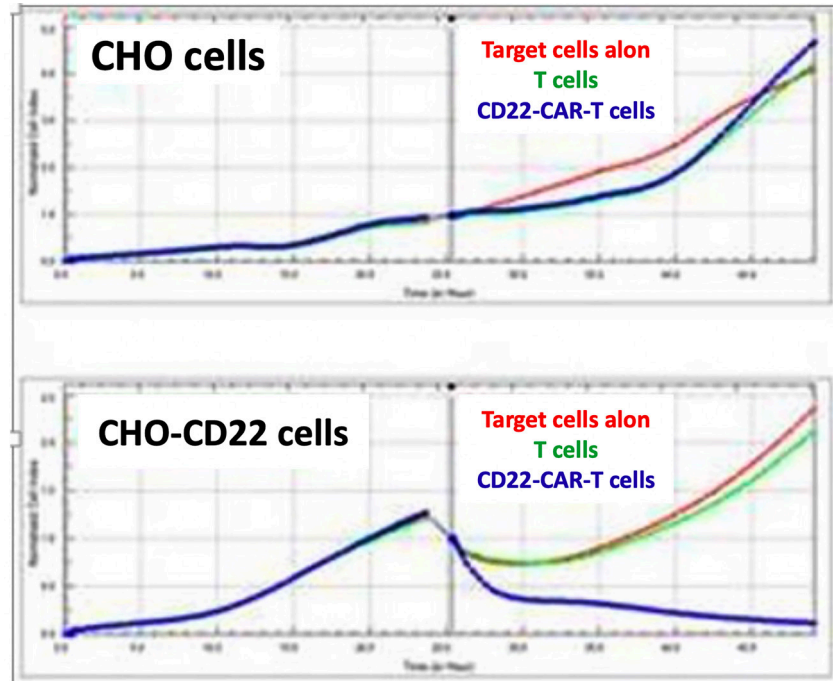


Figure 2. CD22-CAR-T cells kill CHO-CD22 cells.