

Non-transduced T-cells were obtained from human PBMC and transduced with GFP⁺ lentivirus, and activated with CD3-CD28-beads. These T-cells have stable GFP expression and can be used as Mock T-cell control for experiments with CAR-T-cells, for study of T-cell trafficking *in vivo*, for imaging under fluorescent microscope or Xenogen imaging *in vivo* and other applications. The activated GFP⁺ T-cells can be used in all assays as negative control with CAR-T-cells or with different agents stimulating cell motility, invasion, with addition of microenvironment factors regulating T-cell activity.

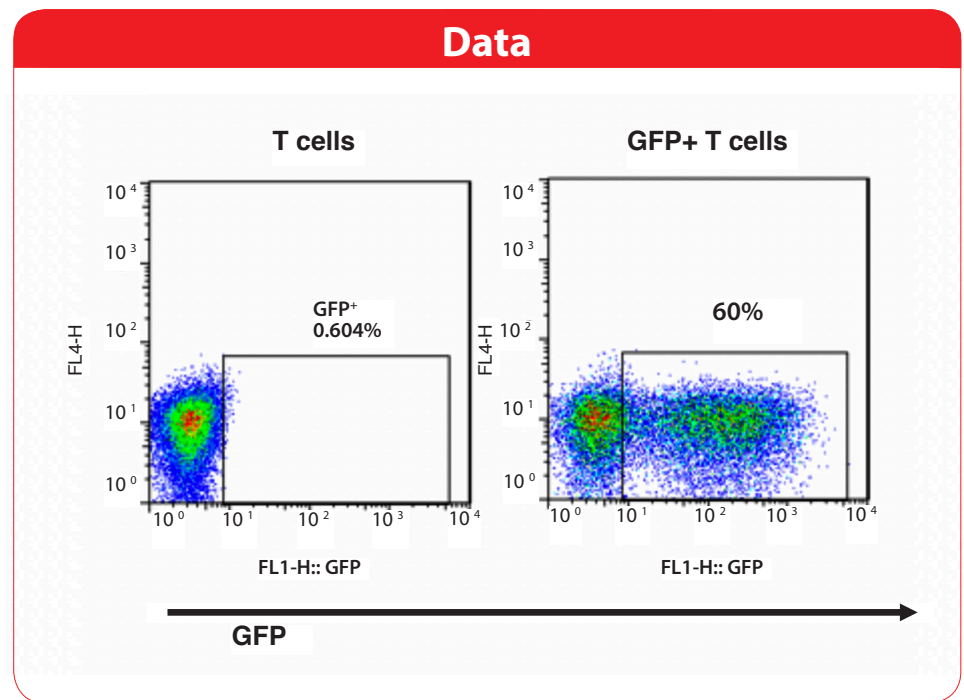


Figure 1. Expression of GFP in T-cells, 8 days after transduction and expansion.

Products and Services

- Mouse Monoclonal Antibody
- Rat Monoclonal Antibody
- Human Antibody
- Hybridoma Sequencing
- Polyclonal Antibody