

ProMab Biotechnologies' CAR-MA new product development programs are being designed for pre-clinical and future clinical applications.

The advantage of CAR-MA cells are that they can reach tumor sites better than CAR-T cells, as they are known to infiltrate tumors. ProMab Biotechnologies has engineered macrophages using differentiated monocytic THP-1 cell line (the same can be done with primary monocytes).

These CAR-MA cells can be used to study the interaction of CAR-MA's within the tumor microenvironment and study different agents (antibodies, cytokines, small molecules, etc) causing macrophage polarization from M2 to M1 phenotype and inducing cancer cell killing or phagocytosis.

Data

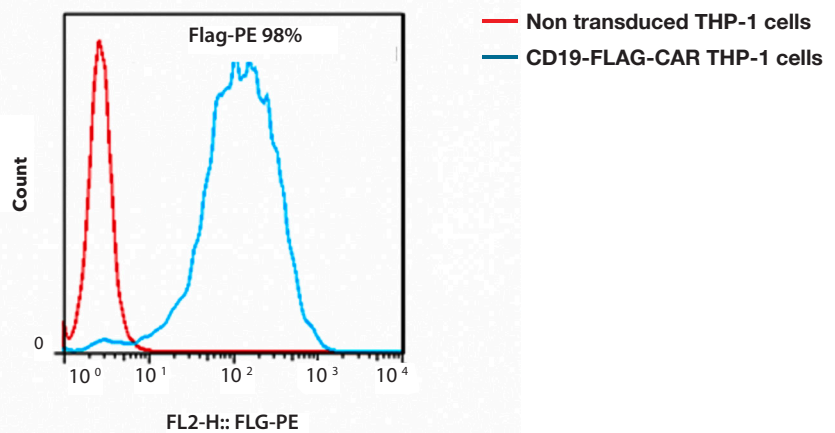


Figure 1. CD19-Flag-CAR-THP-1 positive macrophages are detected by FACS with Flag antibody. The sorted THP-1 cells are shown.

Products and Services

- Mouse Monoclonal Antibody
- Rat Monoclonal Antibody
- Human Antibody
- Hybridoma Sequencing
- Polyclonal Antibody