

Mesothelin recombinant protein labeled with biotin. This labeled probe can be used to detect Mesothelin-positive CAR-T cells or to use for binding with Mesothelin monoclonal antibodies and test affinity, or kinetics of binding. These probes can be used for FACS sorting of positive cells.

Data

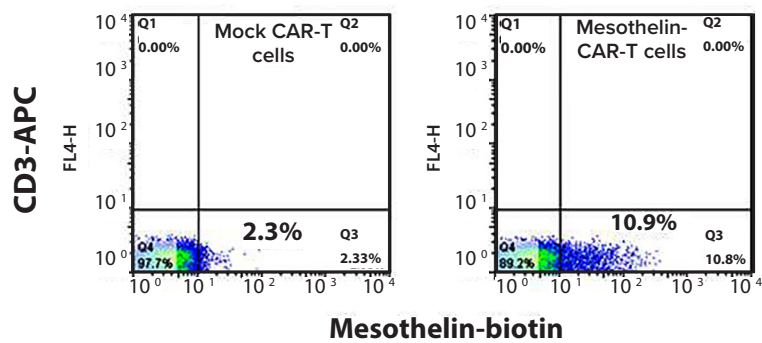


Figure 1. FACS staining with biotinylated Mesothelin protein. Mesothelin biotinylated probe was used to detect Mesothelin-positive CAR-T cells at day 14 after Mesothelin-CAR lentiviral transduction.

Products and Services

- Mouse Monoclonal Antibody
- Rat Monoclonal Antibody
- Human Antibody
- Hybridoma Sequencing
- Polyclonal Antibody