

BCMA recombinant protein labelled with biotin. This labelled probe can be used to detect BCMA-positive CAR-T cells or to use for binding with BCMA monoclonal antibodies and test affinity, or kinetics of binding.

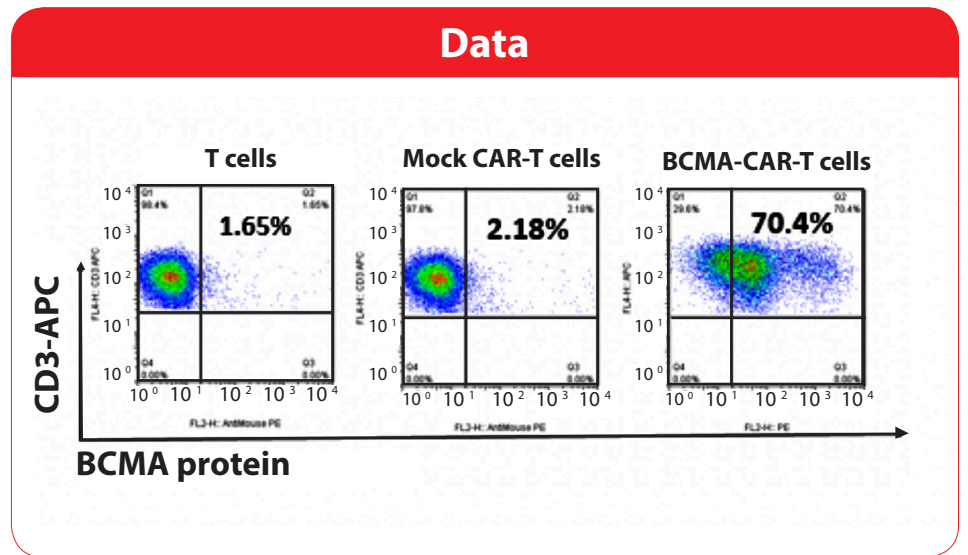


Figure 1. FACS staining with biotinylated BCMA protein to detect BCMA-positive CAR-T cells.

**Products and Services**

- Mouse Monoclonal Antibody
- Rat Monoclonal Antibody
- Human Antibody
- Hybridoma Sequencing
- Polyclonal Antibody