



Products and Services

- Mouse Monoclonal Antibody
- Rat Monoclonal Antibody
- Human Antibody
- Hybridoma Sequencing
- Polyclonal Antibody

Promab Biotechnologies' CAR-T new product development programs are being designed for pre-clinical and future clinical applications.

CAR-T cells can be used for:

1. Compound screening
2. Antibody screening
3. Co-stimulatory and activation domain comparison
4. Personalized medicine and donor variations for CAR-T screening
5. Checkpoint inhibitors
6. Safety switches and regulators of CAR-T functions
7. Pre-clinical in vivo models
8. Treg and T memory cells in CAR-T setting
9. CAR-T signaling, tumor microenvironment
10. Proof of concept studies for clinical trials

The structure of CAR from Promab:

CD37 protein is overexpressed in hematological cancers. CD37-CAR-T cells can be used to target CD37 antigen.

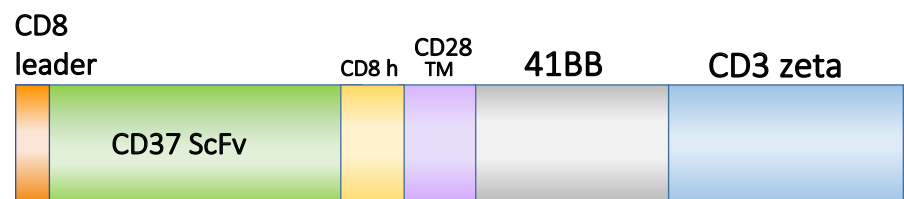


Figure 1. CAR-T cells expressing the above constructs are available from ProMab targeting CD37 antigen. scFv, single chain variable fragment. These CAR-T cells are generated with CD37-41BB-CD3 zeta CAR construct.

To date, ProMab has generated 2nd generation CAR and CAR controls (as shown in Figure 1). ProMab has also generated CAR-T cells and CAR-NK (Natural Killer) effector cells against cancer target cells that show excellent functionality, including dose-dependent and target cell-specific cytotoxic activity.

These CAR-T cells can be tested with target cells in cytotoxic assays and used for testing modulators of immune checkpoint inhibitors (PD-1, CTLA-4 pathways), activators of immune response, or small molecules affecting T-cell or T-reg activity.



Products and Services

- Mouse Monoclonal Antibody
- Rat Monoclonal Antibody
- Human Antibody
- Hybridoma Sequencing
- Polyclonal Antibody

Data

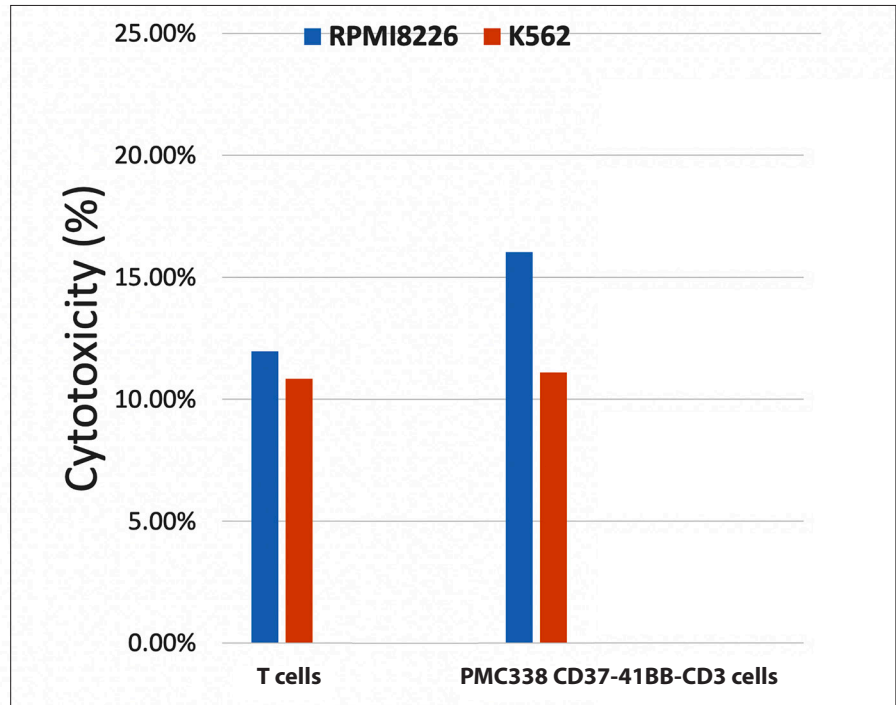


Figure 2. CD37-41BB-CD3 cells are cytotoxic by LDH assay.

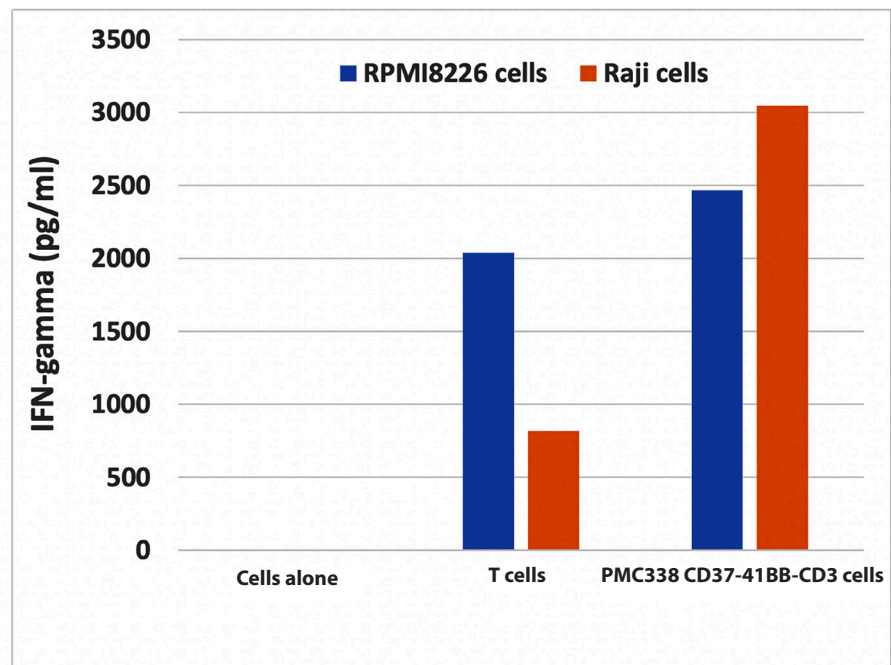


Figure 3. IFN-gamma secretion by CD37-41BB-CD3 cells.