

Products and Services

- Mouse Monoclonal Antibody
- Rat Monoclonal Antibody
- Human Antibody
- Hybridoma Sequencing
- Polyclonal Antibody

Promab Biotechnologies' CAR-T new product development programs are being designed for pre-clinical and future clinical applications.

CAR-T cells can be used for:

1. Compound screening
2. Antibody screening
3. Co-stimulatory and activation domain comparison
4. Personalized medicine and donor variations for CAR-T screening
5. Checkpoint inhibitors
6. Safety switches and regulators of CAR-T functions
7. Pre-clinical in vivo models
8. Treg and T memory cells in CAR-T setting
9. CAR-T signaling, tumor microenvironment
10. Proof of concept studies for clinical trials

The structure of CAR from Promab:

BCMA protein is overexpressed in multiple myeloma. BCMA-2-CAR-T cells can be used to target BCMA in multiple myeloma.

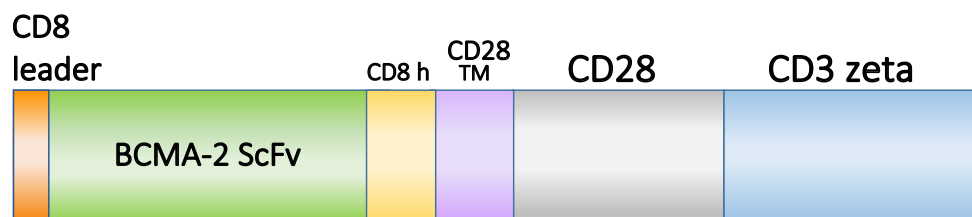


Figure 1. CAR-T cells expressing the above constructs are available from Promab targeting BCMA-2 antigen. ScFv, single chain variable fragment. These CAR-T cells are generated with BCMA-2-CD28-CD3 zeta CAR construct. Humanized BCMA-2 is also available from Promab (PM-CAR1033-1M)

To date Promab generated 2nd generation CAR and CAR controls as shown in Figure 1, CAR-T cells and CAR-Natural Killer (NK) effector cells against cancer target cells that show excellent functionality, including dose-dependent and target cell-specific cytotoxic activity.

These CAR-T cells can be tested with target cells in cytotoxic assays and used for testing modulators of immune checkpoint inhibitors (PD-1, CTLA-4 pathways) or activators of immune response, small molecules affecting T cell or T reg activity.



Products and Services

- Mouse Monoclonal Antibody
- Rat Monoclonal Antibody
- Human Antibody
- Hybridoma Sequencing
- Polyclonal Antibody

Data

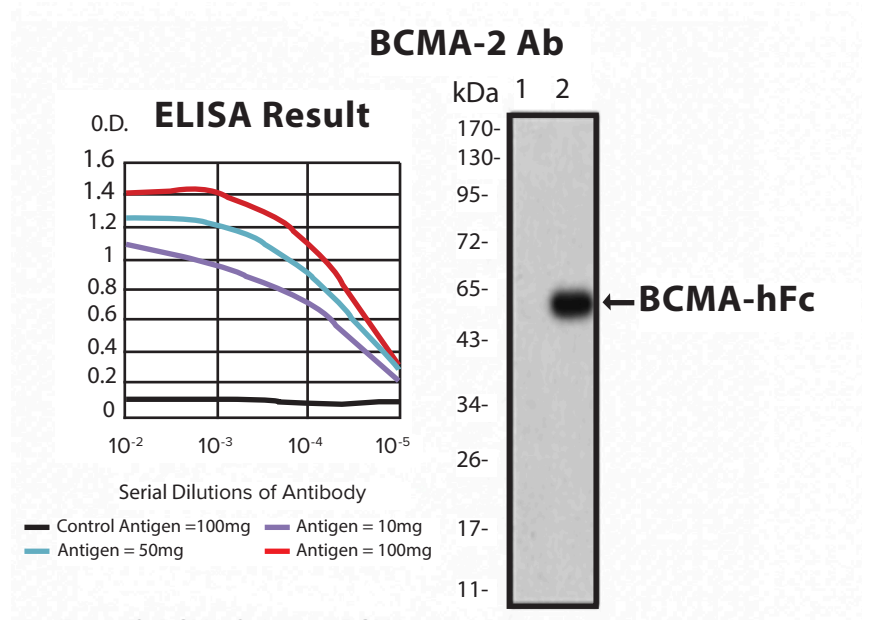


Figure 2. BCMA-2 detects BCMA antigen.

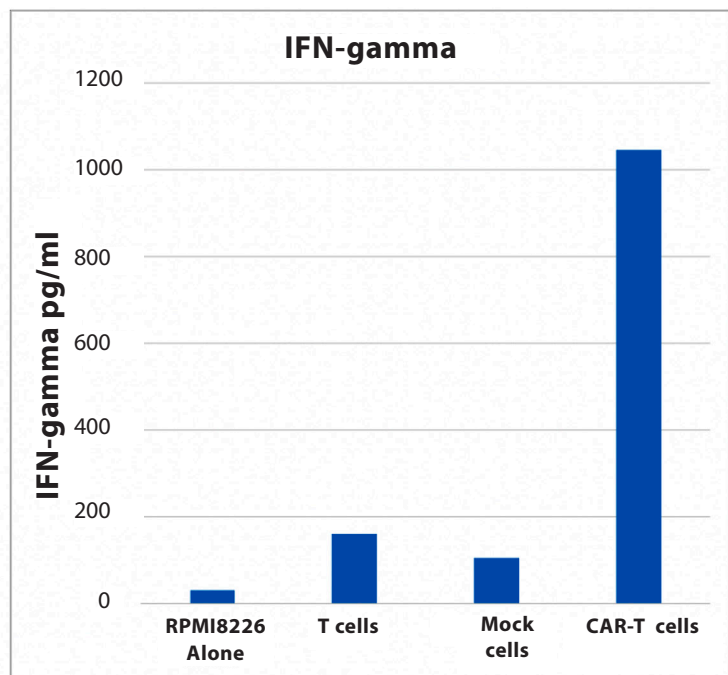


Figure 3. BCMA-2-CAR-T cells secrete IFN-gamma against multiple myeloma RPMI8226 cells.