



Products and Services

- Mouse Monoclonal Antibody
- Rat Monoclonal Antibody
- Human Antibody
- Hybridoma Sequencing
- Polyclonal Antibody

Promab Biotechnologies' CAR-T new product development programs are being designed for pre-clinical and future clinical applications.

CAR-T cells can be used for:

1. Compound screening
2. Antibody screening
3. Co-stimulatory and activation domain comparison
4. Personalized medicine and donor variations for CAR-T screening
5. Checkpoint inhibitors
6. Safety switches and regulators of CAR-T functions
7. Pre-clinical in vivo models
8. Treg and T memory cells in CAR-T setting
9. CAR-T signaling, tumor microenvironment
10. Proof of concept studies for clinical trials

The structure of CAR from Promab

CD22 protein is often overexpressed in leukemia and lymphoma. It is used for targeting this hematological diseases in clinical trials.

CD22 CAR construct

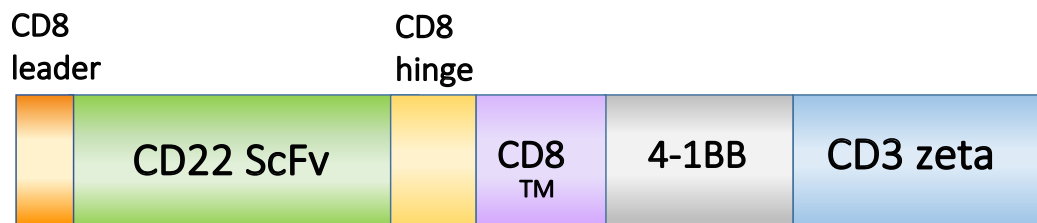


Figure 1. CAR-T cells expressing the above constructs are available from ProMab targeting CD22 antigens. ScFv means single chain variable fragment. These CAR-T cells are generated with CD22-CD8TM-41BB-CD3 zeta CAR construct.

To date, ProMab has generated 2nd generation CAR and CAR controls (as shown in Figure 1). ProMab has also generated CAR-T cells and CAR-NK (Natural Killer) effector cells against cancer target cells that show excellent functionality, including dose-dependent and target cell-specific cytotoxic activity.

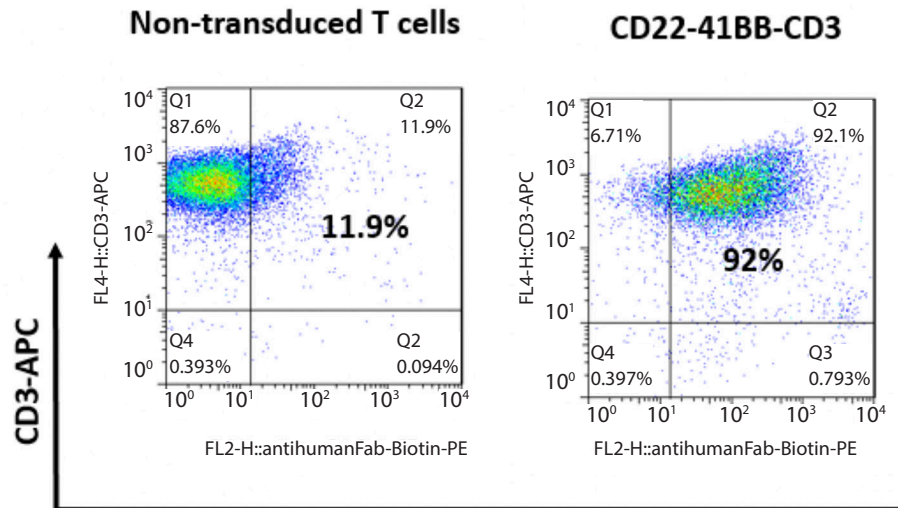
These CAR-T cells can be tested with target cells in cytotoxic assays and used for testing modulators of immune checkpoint inhibitors (PD-1, CTLA-4 pathways), activators of immune response, or small molecules affecting T-cell or T-reg activity.



Products and Services

- Mouse Monoclonal Antibody
- Rat Monoclonal Antibody
- Human Antibody
- Hybridoma Sequencing
- Polyclonal Antibody

Data



Human Fab

Figure 2. FACS analysis with human FAB antibody shows expression of CD22-CAR

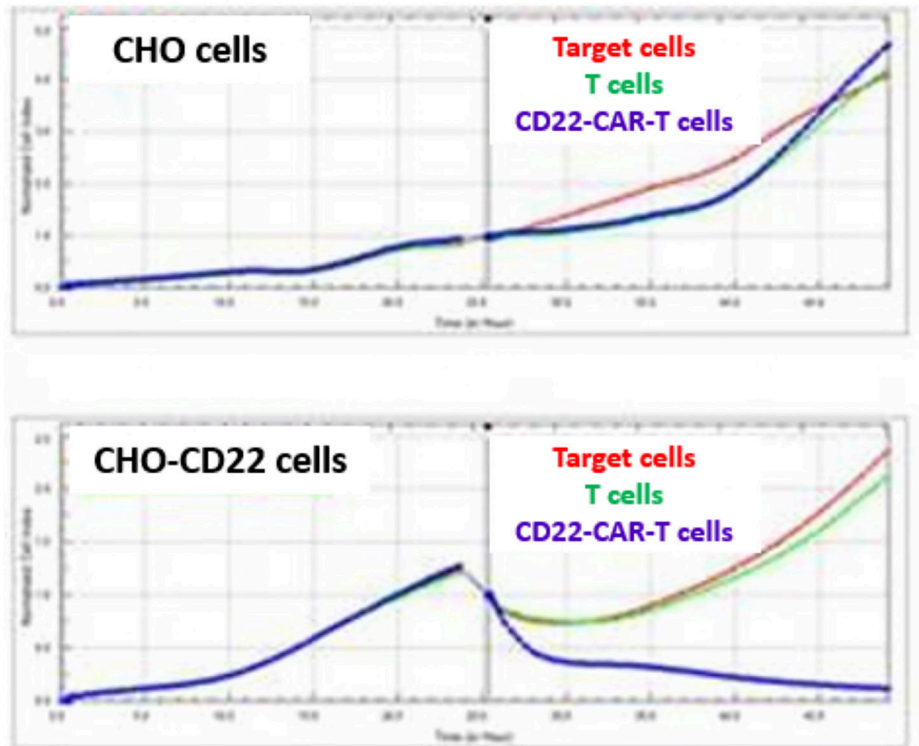


Figure 3. Top panel: RTCA cytotoxicity activity of effector CD22-4-1BB-CD3-CAR-T cells against parental CHO target cells. Lower panel: RTCA cytotoxicity activity of effector CD22-4-1BB-CD3-CAR-T cells against CHO-CD22 target cells available from ProMab. CD22-4-1BB-CAR-T cells are shown. Effector: Target cells ratio=10:1.



Products and Services

- Mouse Monoclonal Antibody
- Rat Monoclonal Antibody
- Human Antibody
- Hybridoma Sequencing
- Polyclonal Antibody

Data

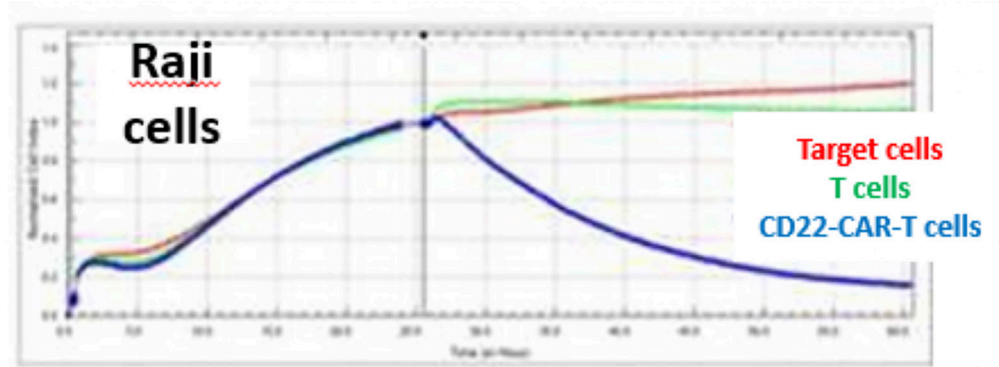


Figure 4. RTCA cytotoxicity activity of effector CD22-4-1BB-CD3-CAR-T cells against Raji target cells.