

Raji cells which are CD19+ are generated using lentiviral GFP transduction (CD19+eGFP cells).

These cells can be used as target cells for CAR-T with CD19-CAR-T cells.

The cells stably express GFP and are about 80% positive for GFP expression.

Raji-GFP cells are analysed by flow-cytometry (Figure 1).

The cells can be used for cytotoxicity assays or IFN-gamma release assay similarly to Raji cells (Figure 2).

PM-Raji-GFP cells

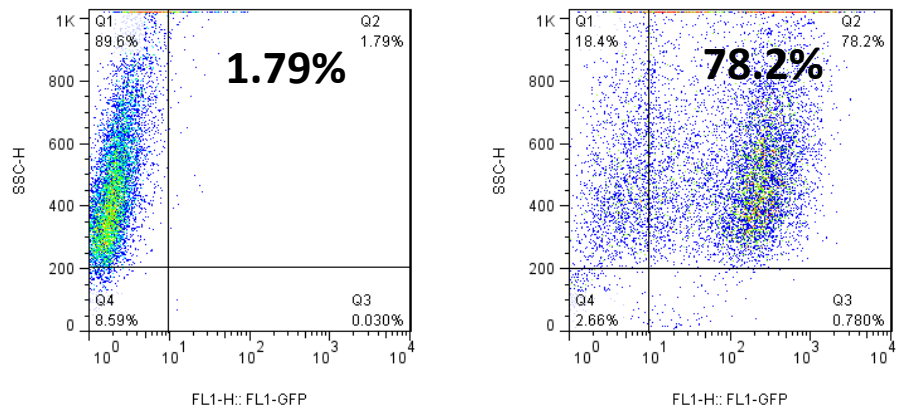


Figure 1. Flow cytometry analysis shows almost 80% are positive for GFP.

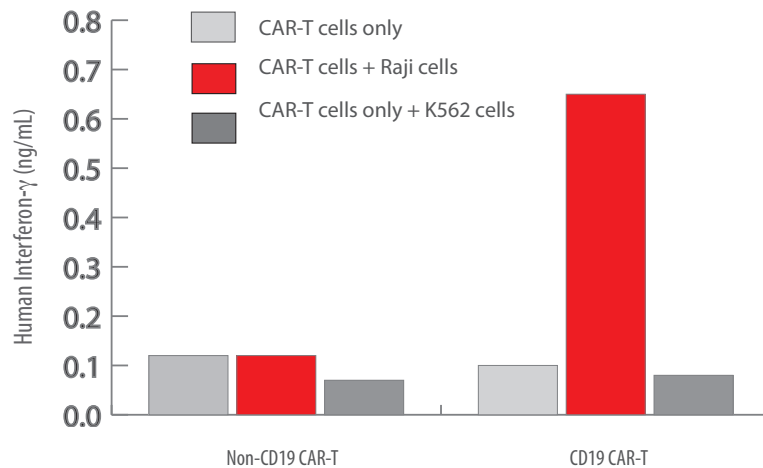


Figure 2. Raji cells express high level of IFN-gamma with CAR-T effector cells.

Products and Services

- Mouse Monoclonal Antibody
- Rat Monoclonal Antibody
- Human Antibody
- Hybridoma Sequencing
- Polyclonal Antibody