

PM-K562 cell line is a cell line from the pleural effusion of a 53-year-old female with chronic myelogenous leukemia in terminal blast crises.

We generated stable GFP-positive K562 using eGFP-lentiviral plasmid.

Figure 1 demonstrates that >82% are positive for GFP.

These cells are CD19-negative and can be used as a negative control for CD19-CAR-T cells in cytotoxicity assays as shown with K562 cells (Figure 2).

K562-GFP cells

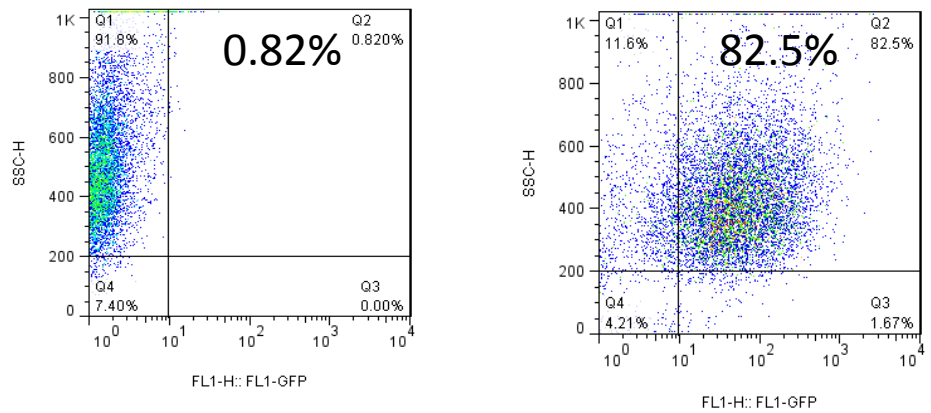


Figure 1. Flow cytometry shows high GFP expression in K562-GFP cells.

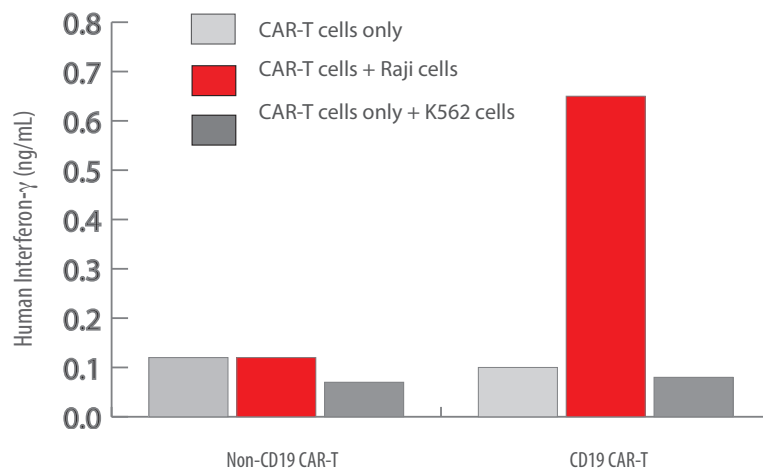


Figure 2. IFN-gamma secretion by K562 cells in the presence of CD19-CAR-T cells

- Products and Services**
- Mouse Monoclonal Antibody
 - Rat Monoclonal Antibody
 - Human Antibody
 - Hybridoma Sequencing
 - Polyclonal Antibody