

CHO cells are Chinese hamster ovary cells-are epithelial cells derived from the ovary of the Chinese hamster, often used in biological and medical research in the production of therapeutic proteins. This cell line have found wide use in studies of genetics, toxicity screening, nutrition and gene expression, particularly to express recombinant proteins. CHO cells are the most commonly used mammalian hosts for industrial production of recombinant protein therapeutics. CHO cells have stable expression of CD19 antigen and can be used as target cells for CAR-T therapy.

DATA

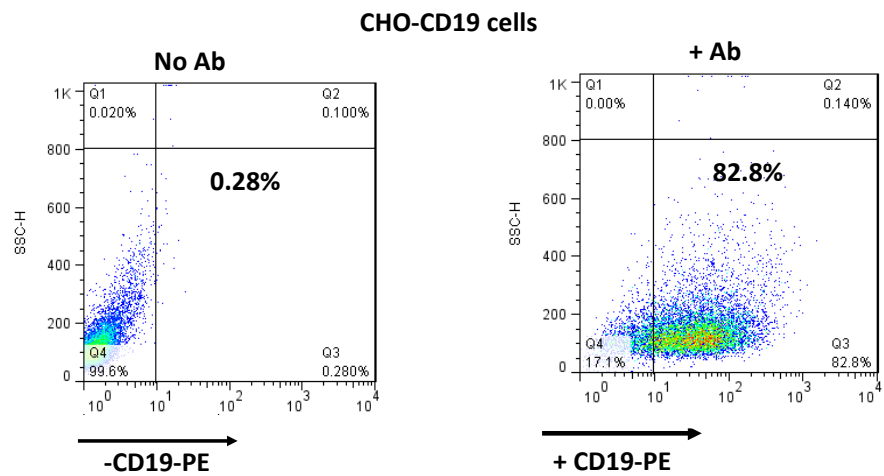


Figure 1. Flow cytometry staining showing about 83% CD19-positive CHO cells.

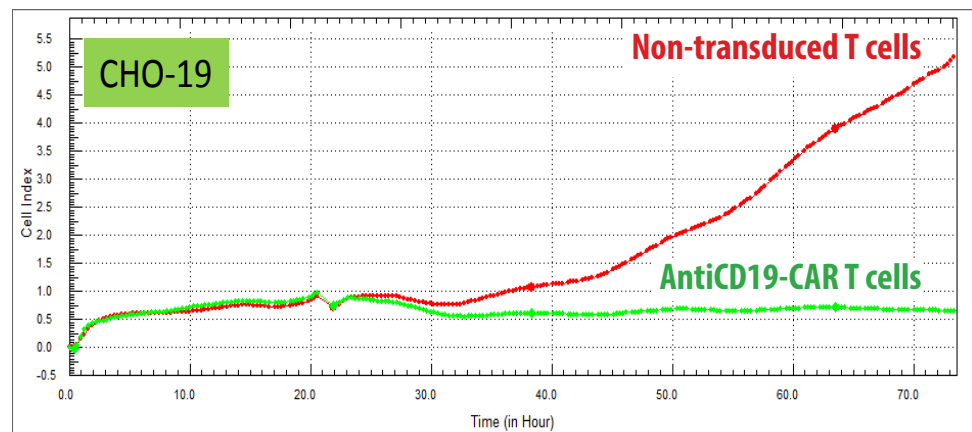


Figure 2. RTCA cytotoxicity assay with CD19-CAR-T cells and CHO-CD19-positive target cells. Effector:Target cells ratio is 10:1.

Products and Services

- Mouse Monoclonal Antibody
- Rat Monoclonal Antibody
- Human Antibody
- Hybridoma Sequencing
- Polyclonal Antibody